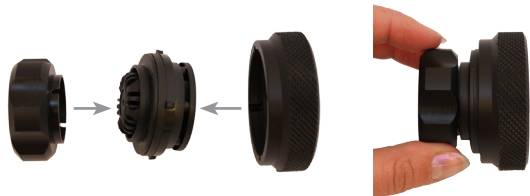
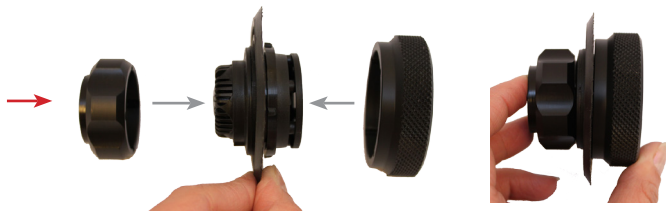


13300 Cuff Dump: Use Disassembly Tool internal part 18417A and Disassembly Tool external part 18417B to unscrew the valve.



13320 On/Off: Use Disassembly Tool internal part 18417A and Disassembly Tool external part 18417B to unscrew the valve.

Note!
Tool for external part is turned the opposite way.



13330 String: Use Disassembly Tool internal part 18417A and Disassembly Tool external part 18417B to unscrew the valve. String entry through the tool.



Cleaning

Wash the entire valve with luke warm soapy water and rinse thoroughly with warm water. Store the valve open (turned off).

Document produced by
Johanna Strömgren
2014-05-20

Dump Valves

13225/13226/13300/13320/13330/13200

- 13225 Low Profile
- 13300 Cuff Dump
- 13330 String
- 13226 Low Profile
- 13320 On/Off
- 13200 Low Profile



Suitable Valve Ports

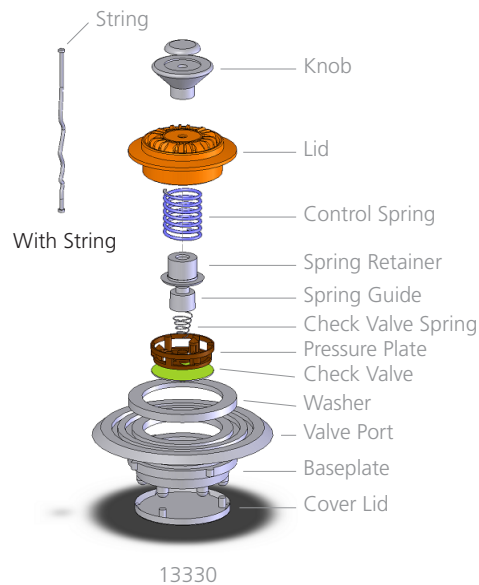
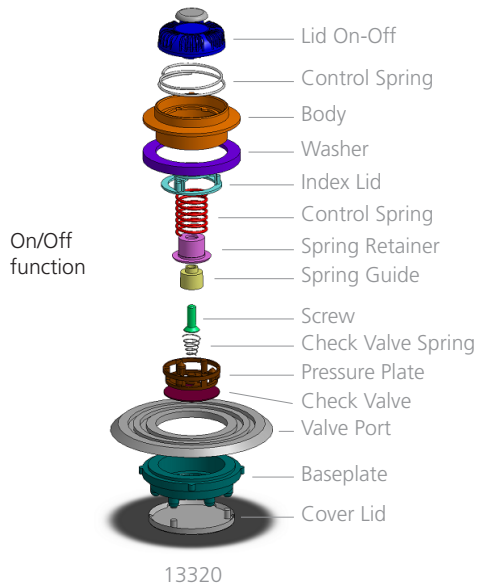
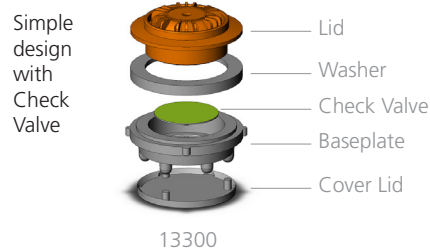
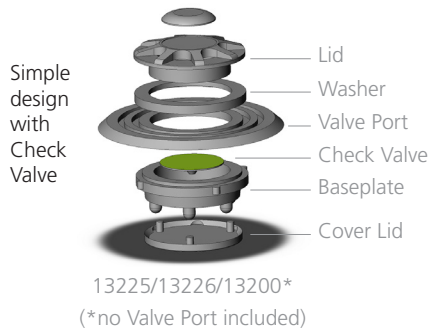
- Valve Port dual groove 75 mm (item no. 60885).
- Valve Port dual groove 85 mm (item no. 60895).
- Internal Valve Port 68 mm (item no. 60870).

Valve Port dual groove 75 mm (item no. 60885) is included in 13225, 13320 and 13330. Internal Valve Port 68 mm (item no. 60870) is included in 13226. No Valve Port is included in 13200.

Tools

- Disassembly Tool internal part (item no. 18417A).
- Disassembly Tool external part (item no. 18417B).

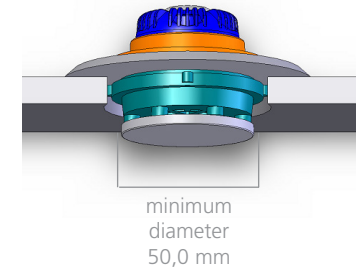
INNOVATIVE SAFETY SOLUTIONS – MADE IN SWEDEN



Suit preparations

Attach the Dump Valve into the suit at a place where the valve is easily accessible. The hole cut in the fabric must be a minimum diameter of 50 mm (1,97") in diameter.

The Baseplate of these valves must seal against the Valve Port. If the suit material is not trimmed back enough to allow sufficient connection, the valve will leak.



Service

Service should be made annually by a SI TECH Qualified Service Technician.

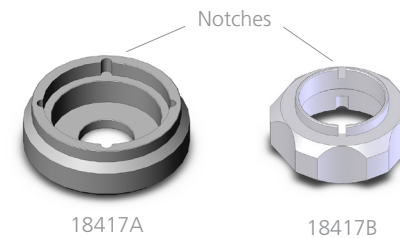
How to use

On/Off: Push the lid down and turn to close (off) and turn top open (on).

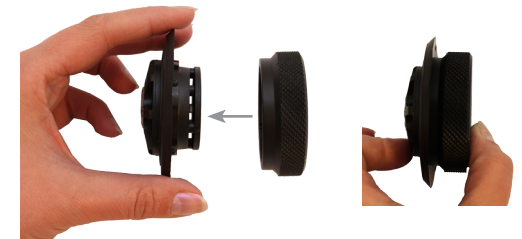
String: Pull the string to open the valve.

Disassembly

Use the Disassembly Tools to open the valve. Fit the valve knobs with the notches in the tool/tools. Turn counter clockwise to disassemble the top lid from valve body.



13225/13226/13200 Low Profile:
Use Disassembly Tool internal part 18417A to unscrew the valve.



SI TECH Dump Valves are intended for attachment in a Valve Port that is permanently glued to the suit.