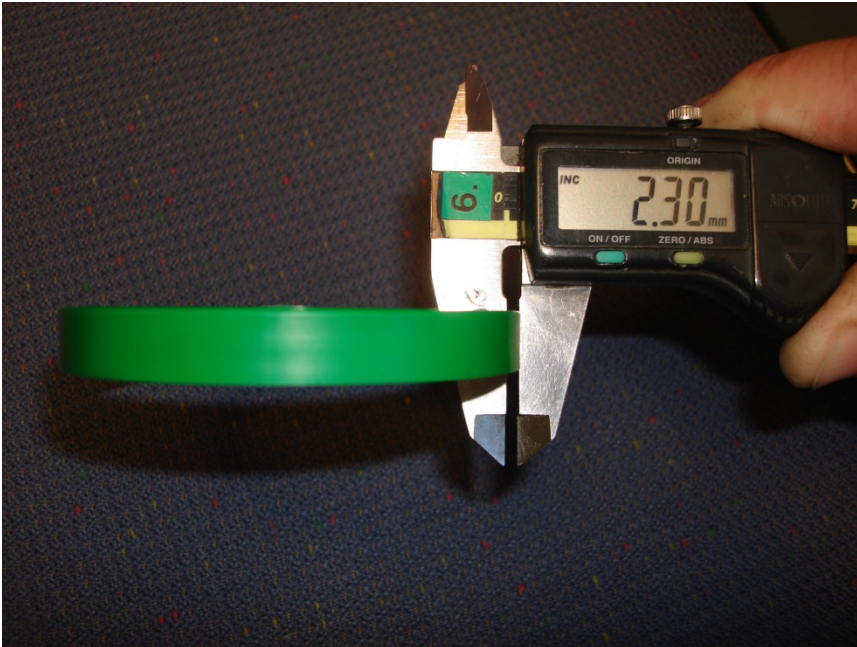


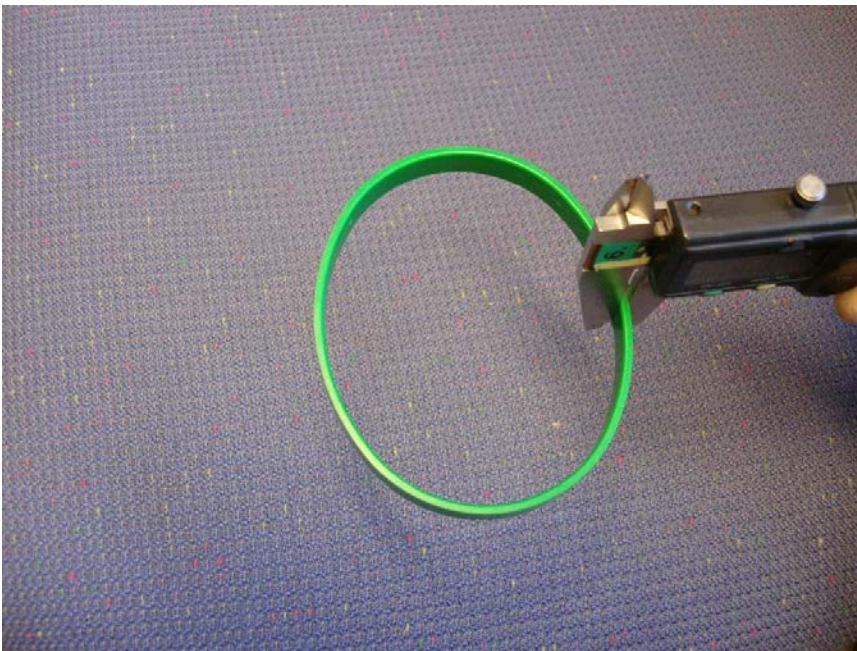
Measuring instruction for ANTARES Spanner rings



The Spanner ring should be measured with calipers in the middle of the leg.

Green ring =
2,3-2,4 mm

Blue ring =
2,0-2,1 mm



Note that the Spanner ring should be measured at the long side.

(Pictures above show the green ring – the blue ring is to be measured in the same manner as the green.)